

TCC 2020-21 SEQUENCE COMPETITION

Judge: Helen Taylor ARPS DPAGB BPE3*

16 AN EVENING WALK ALONG THE RIVER MEDWAY by Philip Easom



YALDING BRIDGE



ONE OF MANY FOOTBRIDGES



GRAFFITI UNDER THE BRIDGE



WALKERS ALONG THE WAY



OAK WEIR LOCK



NEARLY HOME













16 AN EVENING WALK ALONG THE RIVER MEDWAY by Philip Easom



YALDING BRIDGE



ONE OF MANY FOOTBRIDGES



GRAFFITI UNDER THE BRIDGE



WALKERS ALONG THE WAY



OAK WEIR LOCK



NEARLY HOME

20 BUG RANCH TEXAS by Pam Sherren



#1



#2



#3



#4



#5





MOTEL

CAFE

WELCOME TO CONWAY TEXAS







20 BUG RANCH TEXAS by Pam Sherren



#1



#2



#3



#4



#5

19 DRAMA OF VILLAGE CRICKET by John Hunt



FAST ONE COMING



GOING TO THE BOUNDARY



CLEAN BOWLED



HIT OR MISS



FLYING CATCH



THIS IS A GOOGLY













19 DRAMA OF VILLAGE CRICKET by John Hunt



16 LIFE CYCLE OF THE GOAT WILLOW by Colin Burgess

At this time of year, one of the familiar sights in our woodlands and on our roadsides is the Goat Willow, with its soft grey buds gradually transforming into yellow catkins laden with pollen. This sequence portrays that transformation, beginning with the furry bud and concluding with a catkin cascade.



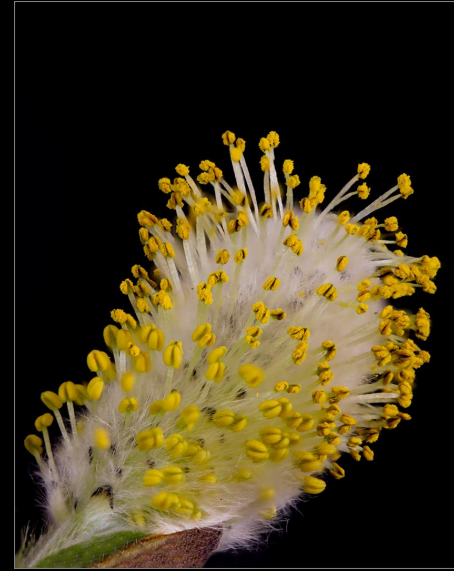
GOAT WILLOW IN BUD



GOAT WILLOW EMERGING



GOAT WILLOW TRANSFORMING



GOAT WILLOW BUD
TRANSFORMED INTO CATKIN



GOAT WILLOW CATKIN CASCADE











16 LIFE CYCLE OF THE GOAT WILLOW by Colin Burgess

At this time of year, one of the familiar sights in our woodlands and on our roadsides is the Goat Willow, with its soft grey buds gradually transforming into yellow catkins laden with pollen. This sequence portrays that transformation, beginning with the furry bud and concluding with a catkin cascade.



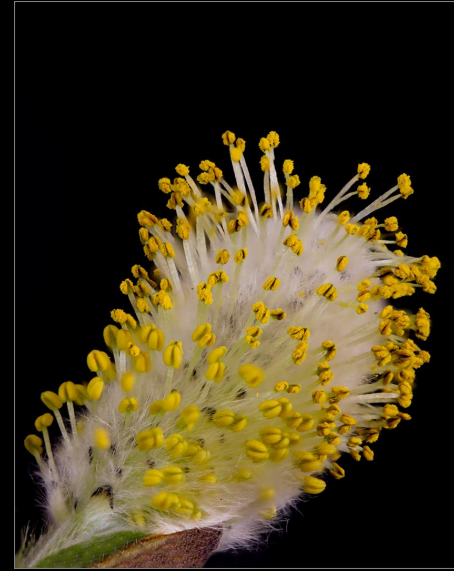
GOAT WILLOW IN BUD



GOAT WILLOW EMERGING



GOAT WILLOW TRANSFORMING



GOAT WILLOW BUD
TRANSFORMED INTO CATKIN



GOAT WILLOW CATKIN CASCADE

19 LIGHTHOUSES AROUND SUNSET by Bryan Ellis



RAYS OF LIGHT



**BELLE TOUT LIGHTHOUSE
SILHOUETTE**



**BELLE TOUT LIGHTHOUSE
AFTER SUNSET**



BLUE HOUR AT BEACHY HEAD



**BEACHY HEAD
LIGHTHOUSE
AFTER SUNSET**



**PORTLAND BILL
LIGHTHOUSE
AT SUNSET**













19 LIGHTHOUSES AROUND SUNSET by Bryan Ellis



RAYS OF LIGHT



**BELLE TOUT LIGHTHOUSE
SILHOUETTE**



**BELLE TOUT LIGHTHOUSE
AFTER SUNSET**



BLUE HOUR AT BEACHY HEAD



**BEACHY HEAD
LIGHTHOUSE
AFTER SUNSET**

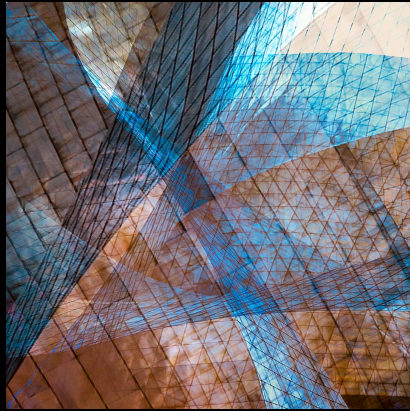


**PORTLAND BILL
LIGHTHOUSE
AT SUNSET**

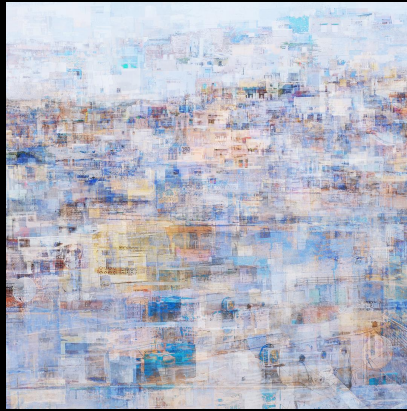
17 MODERN ART by Nicola Bolton



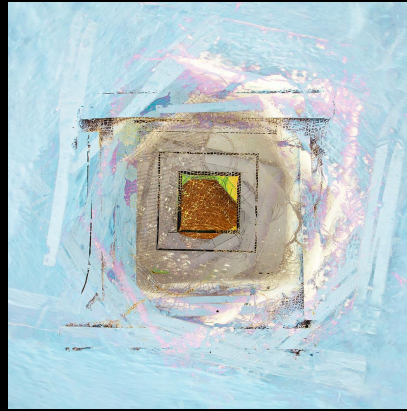
MODERN ART 1



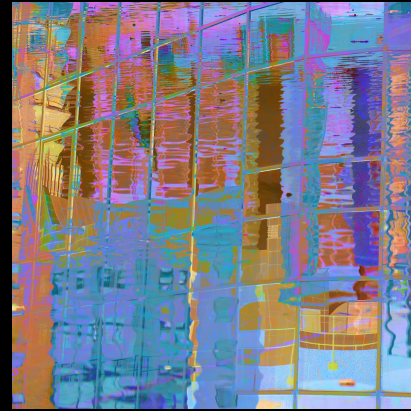
MODERN ART 2



MODERN ART 3



MODERN ART 4

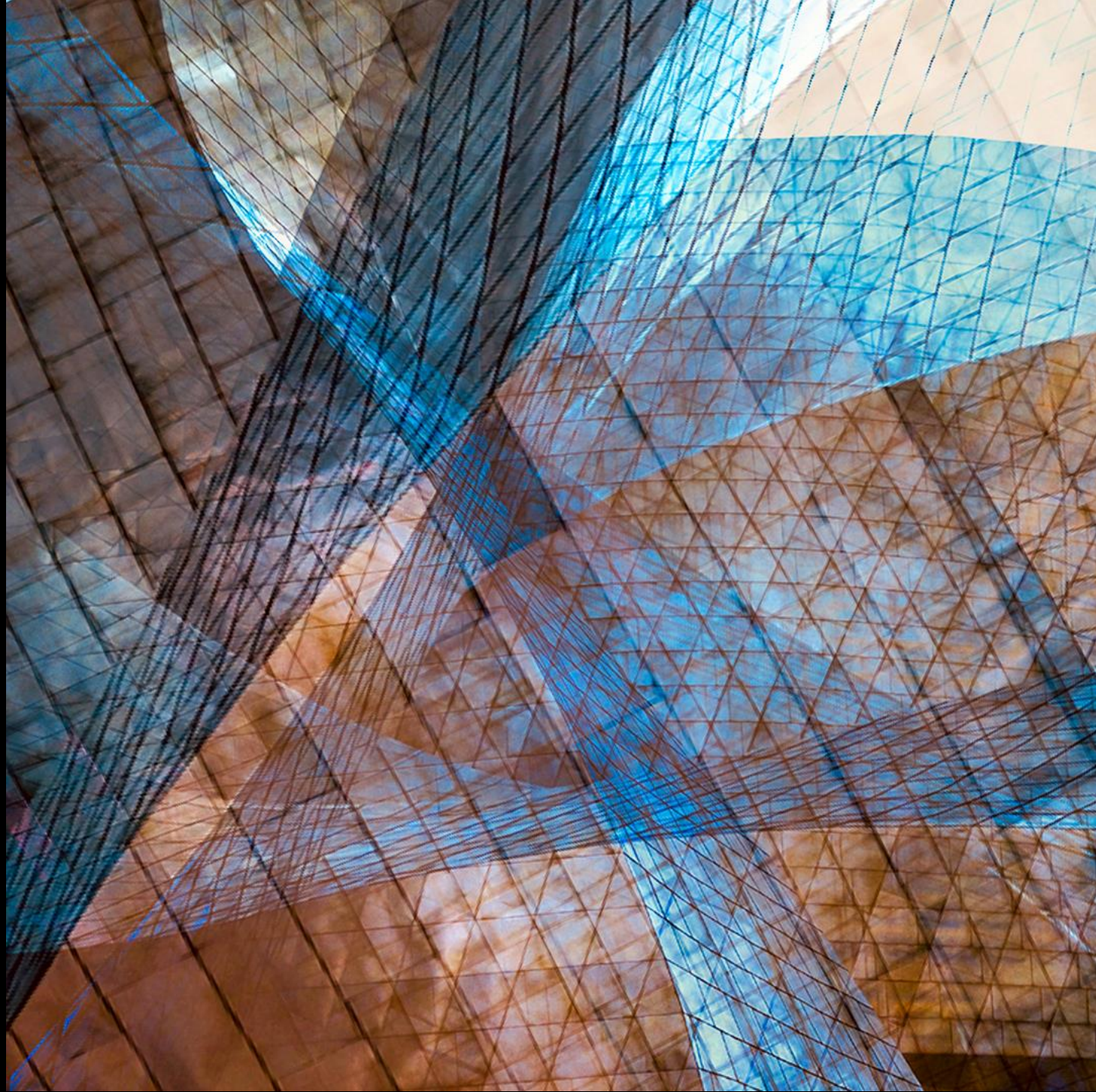


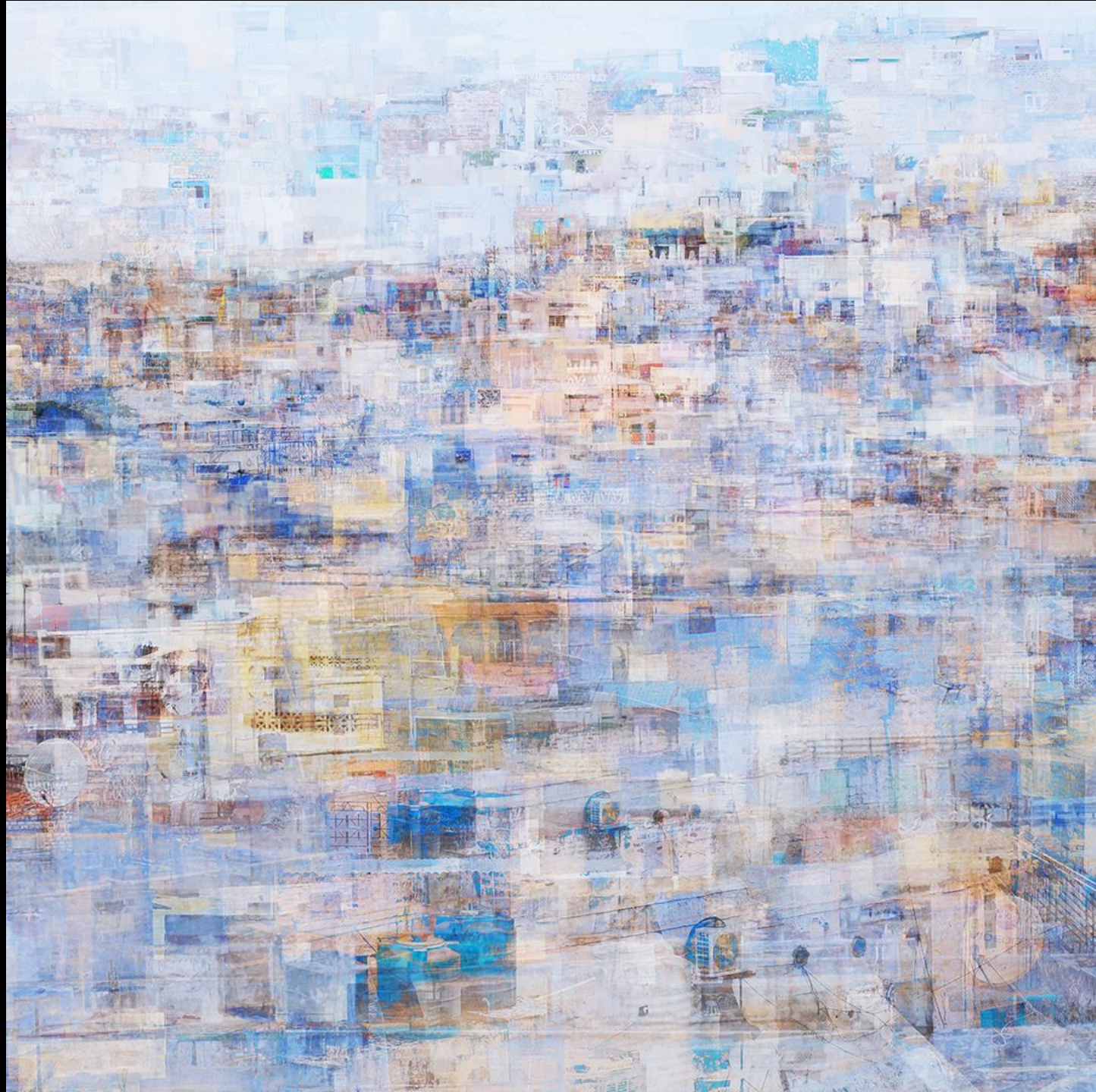
MODERN ART 5

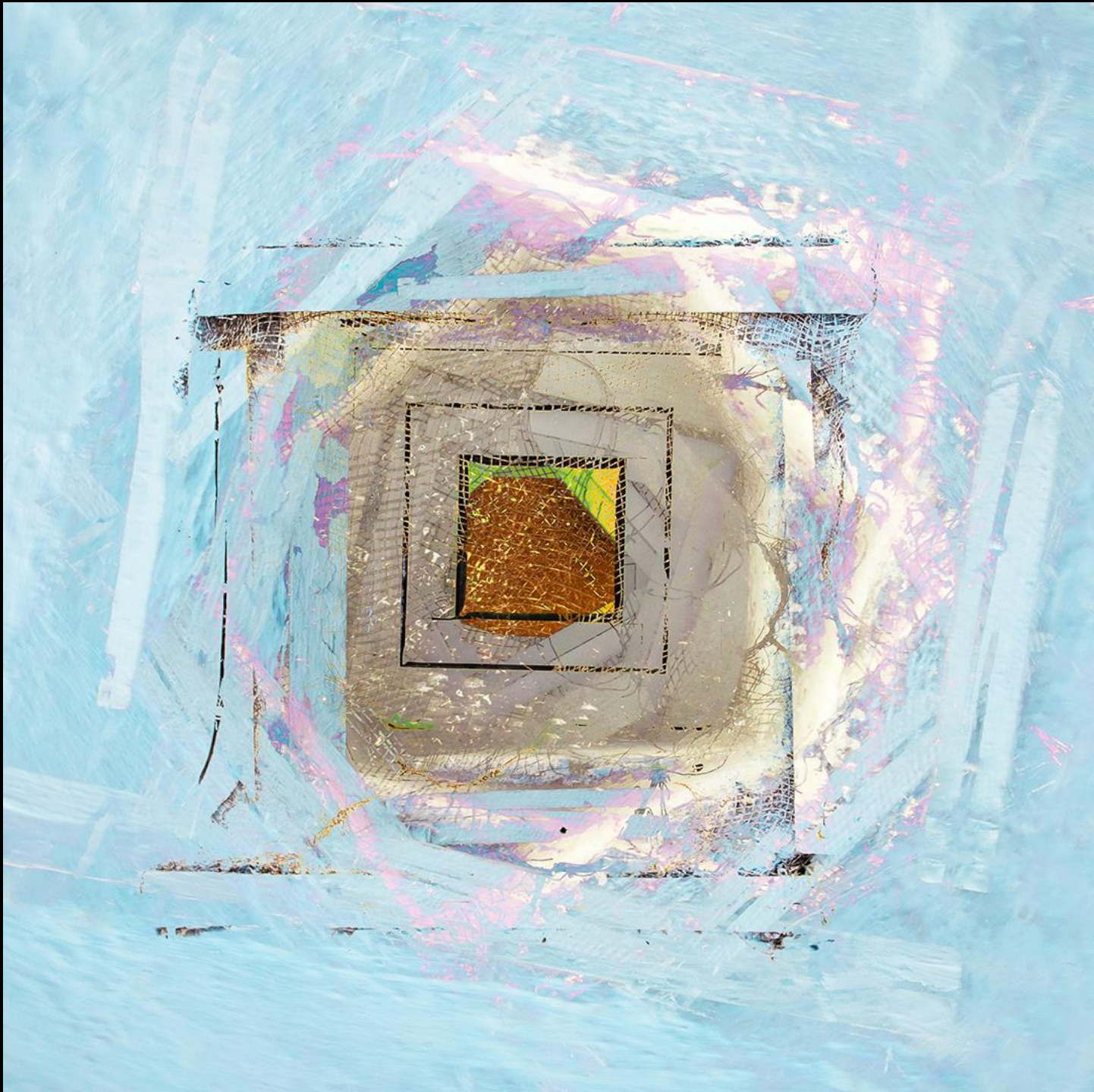


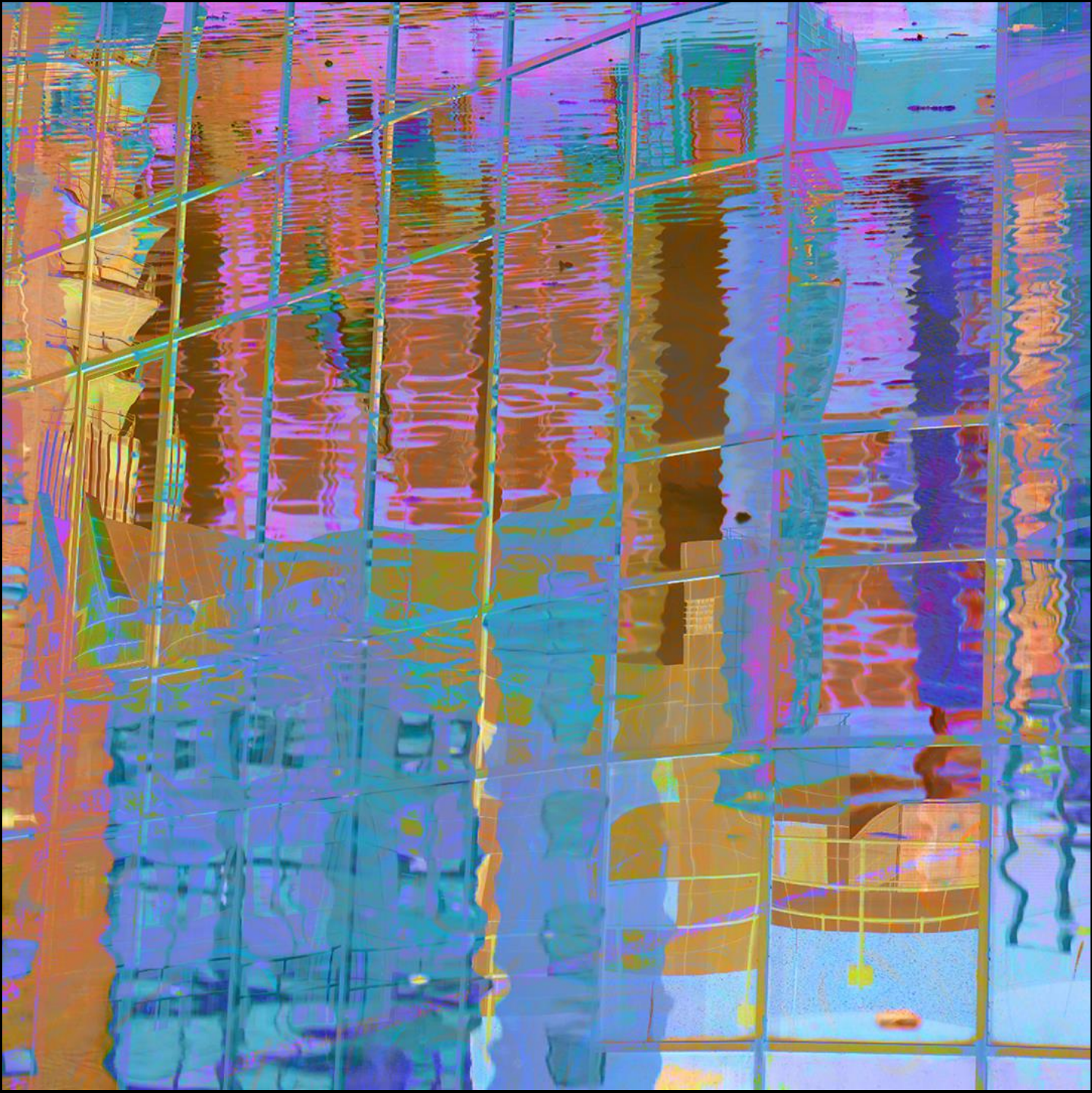
MODERN ART 6









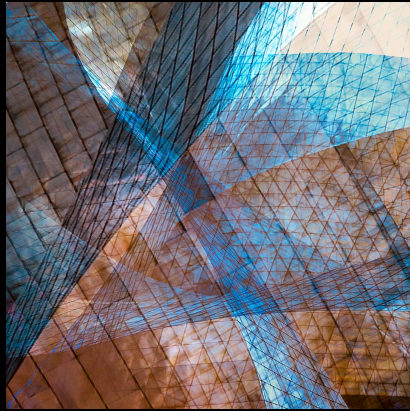




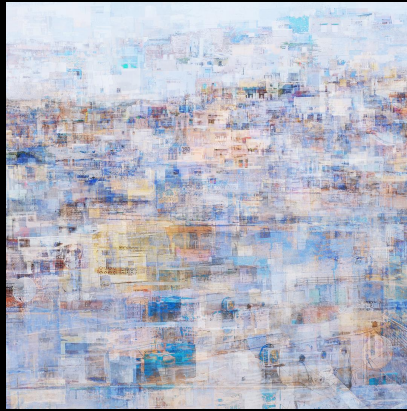
17 MODERN ART by Nicola Bolton



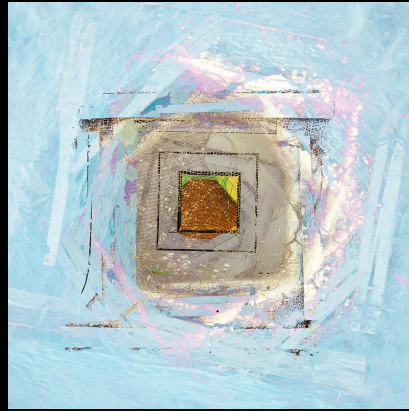
MODERN ART 1



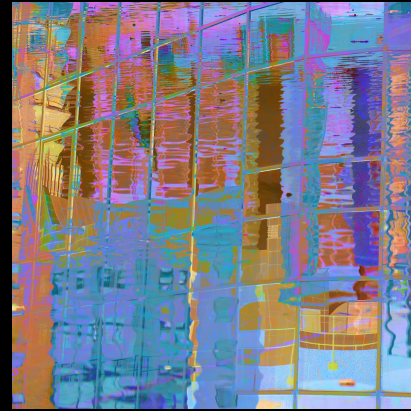
MODERN ART 2



MODERN ART 3



MODERN ART 4



MODERN ART 5



MODERN ART 6

15 SATURDAY AFTERNOON RUGBY AT THE CROSS by Denys Clarke



LINE OUT STRUGGLE



STOPPING THE RUCK



STEALING THE BALL



GOING THROUGH



NICE OFF LOAD



GOING IN LOW TO SCORE













15 SATURDAY AFTERNOON RUGBY AT THE CROSS by Denys Clarke



LINE OUT STRUGGLE



STOPPING THE RUCK



STEALING THE BALL



GOING THROUGH



NICE OFF LOAD



GOING IN LOW TO SCORE

18 SHIPS by Jeremy Stock



A QUEEN AND A SUICIDAL JET SKI



SUCTION HOPPER DREDGER



COASTAL FEEDER
CONTAINER VESSEL



ULCV ULTRA LARGE
CONTAINER VESSEL



THE END OF THE HOLIDAY



TUG PUSHING D.A.T



CUNARD

Queen Elizabeth



WILLEM VAN ORANJE

Boskalis







www.redfunnel.co.uk

RED FALCON
SOUTHAMPTON

RED FALCON



DAT

DAT

DONG-A TANKER

SWITZER FERRY

SWITZER FERRY

18 SHIPS by Jeremy Stock



A QUEEN AND A SUICIDAL JET SKI



SUCTION HOPPER DREDGER



COASTAL FEEDER
CONTAINER VESSEL



ULCV ULTRA LARGE
CONTAINER VESSEL



THE END OF THE HOLIDAY



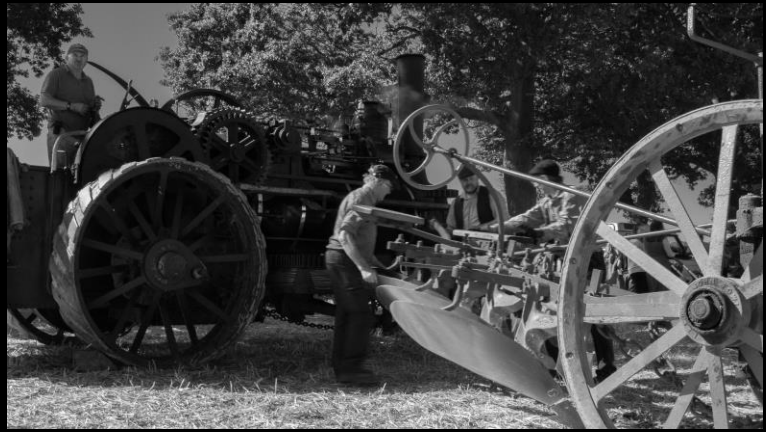
TUG PUSHING D.A.T

17 SPEED THE PLOUGH by Simon Lane

A demonstration of steam ploughing, with the plough being drawn alternatively between two stationary engines



RAISING STEAM CONTROL THE POWER



HOOKING ON



A STEADY FURROW



COMING BACK



END OF THE ROW











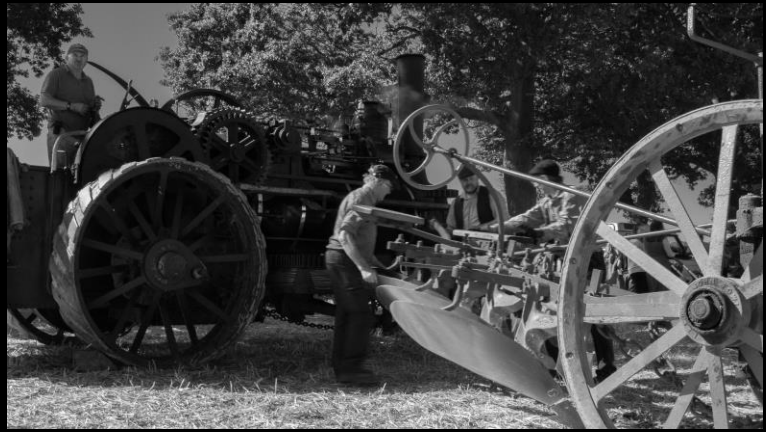


17 SPEED THE PLOUGH by Simon Lane

A demonstration of steam ploughing, with the plough being drawn alternatively between two stationary engines



RAISING STEAM CONTROL THE POWER



HOOKING ON



A STEADY FURROW

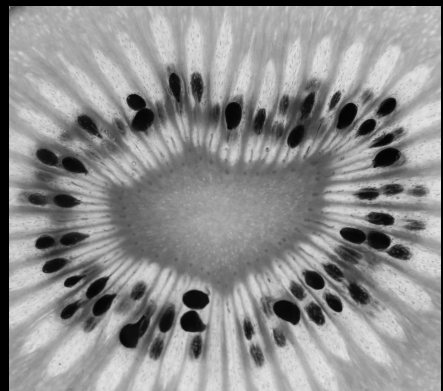


COMING BACK

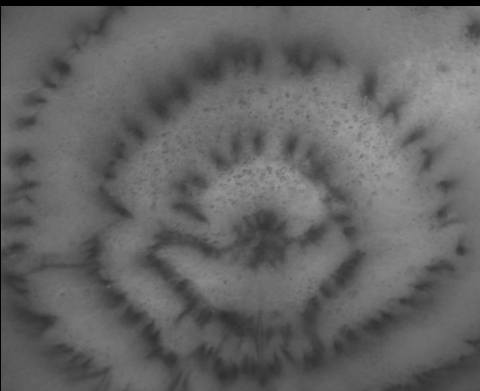


END OF THE ROW

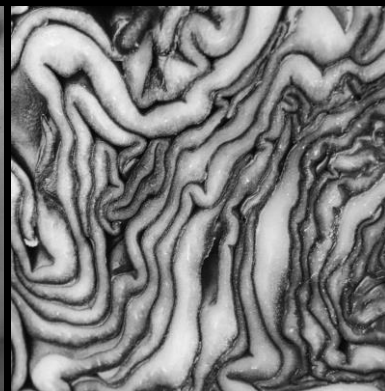
14 THE BEAUTY OF NATURE'S BOUNTY by Nicola King



KIWI



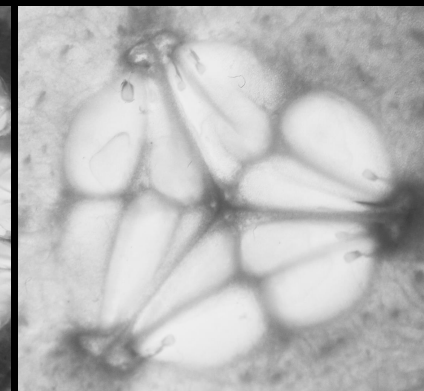
BEETROOT



CABBAGE



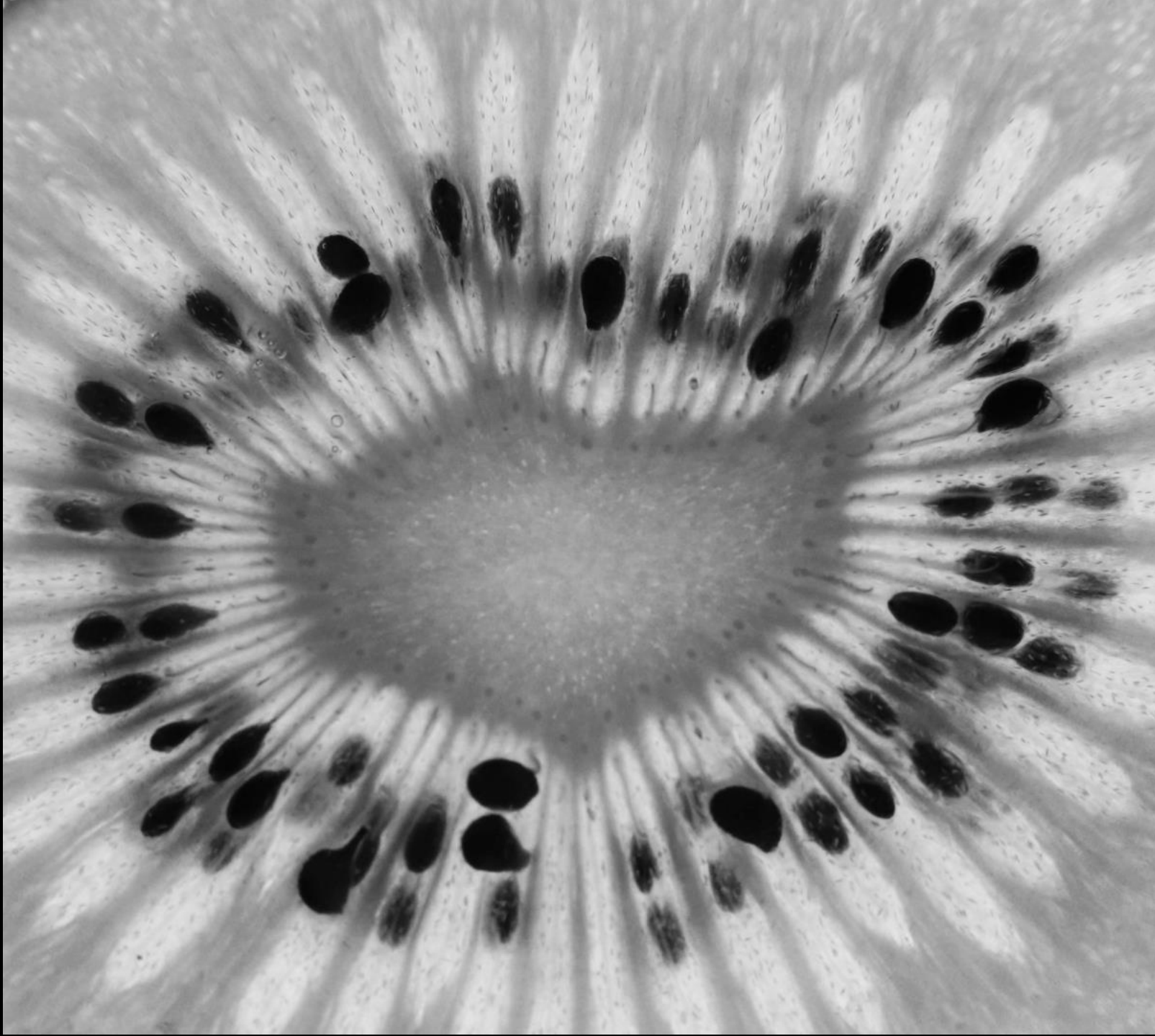
LEMON

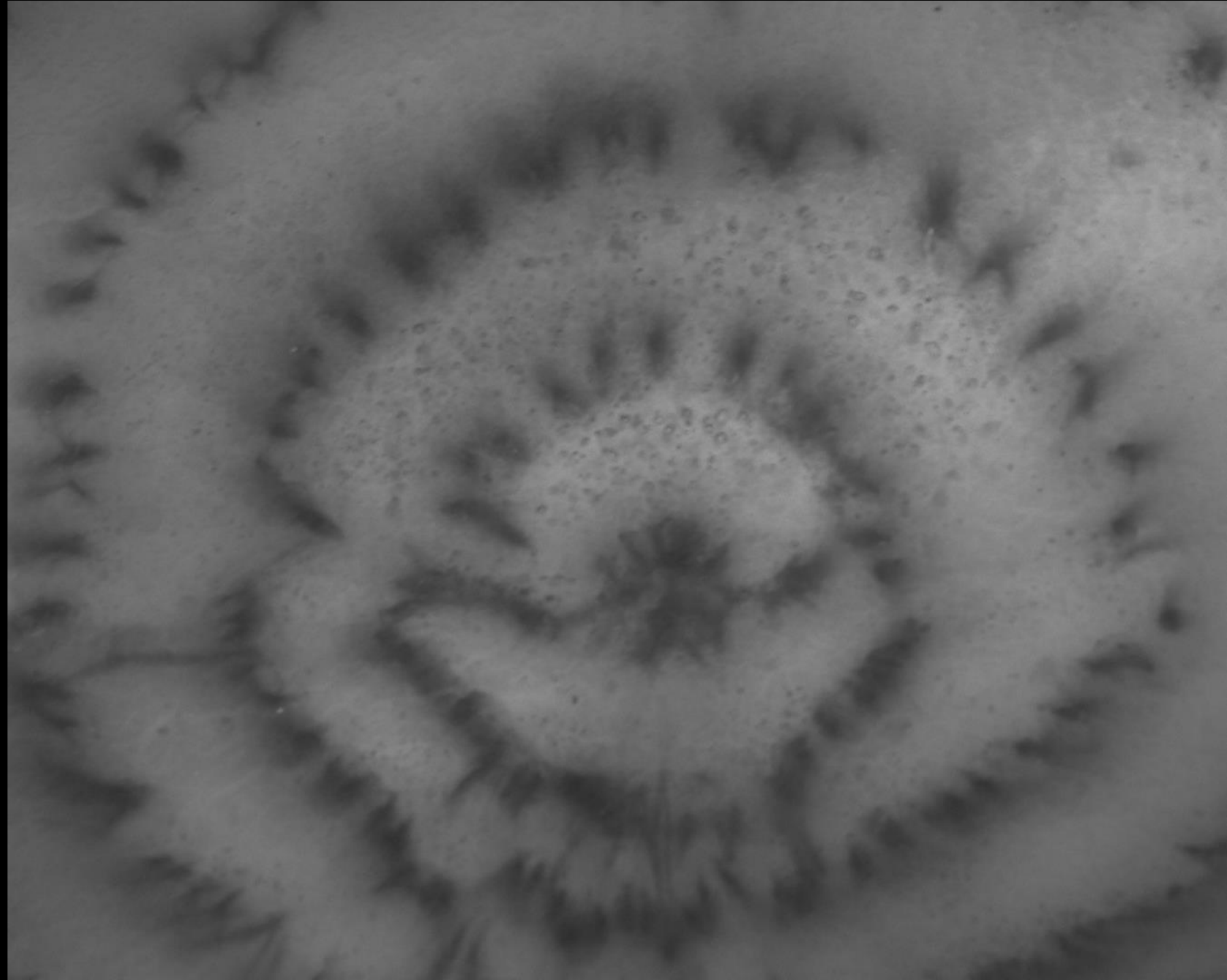


CUCUMBER

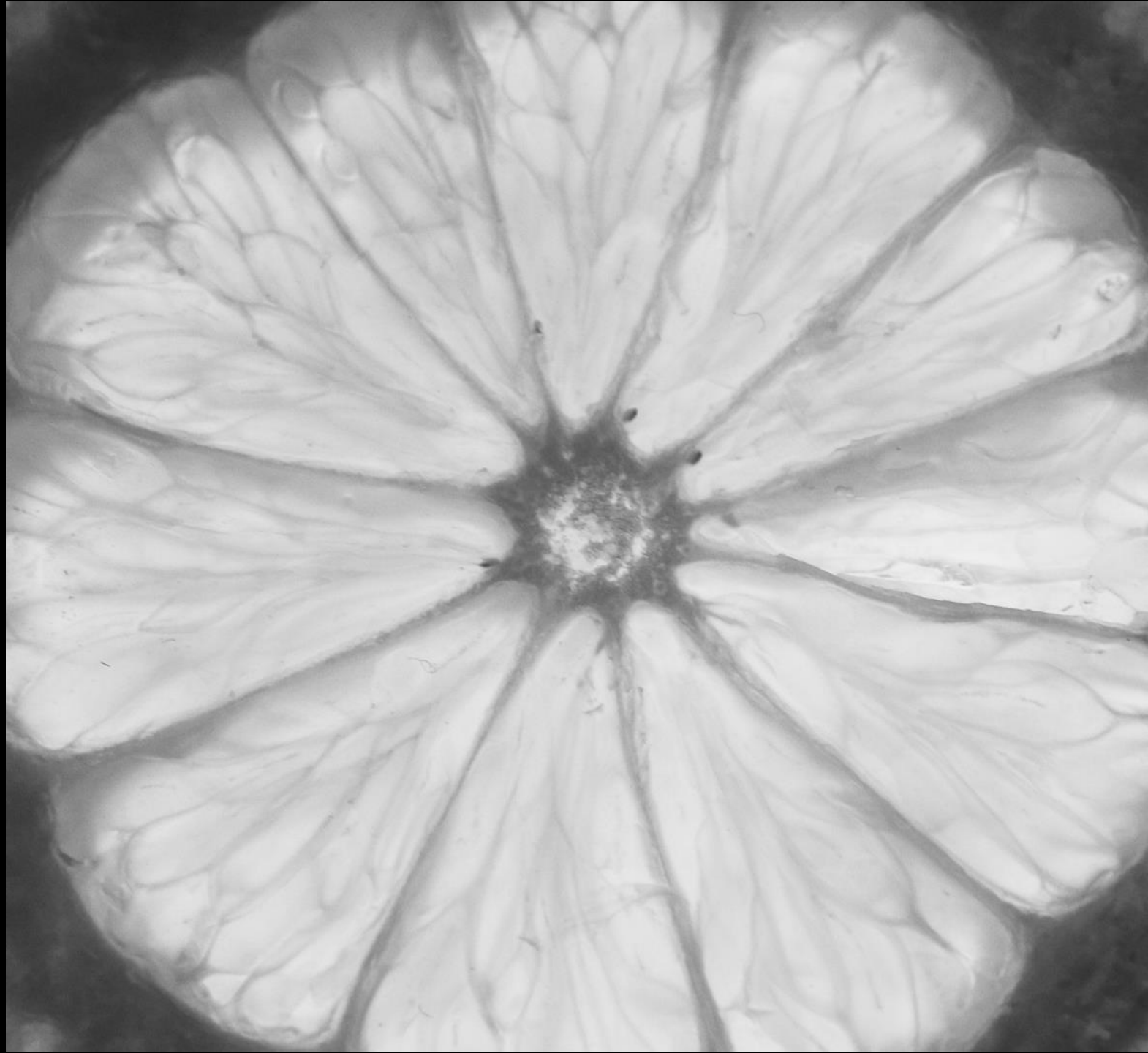


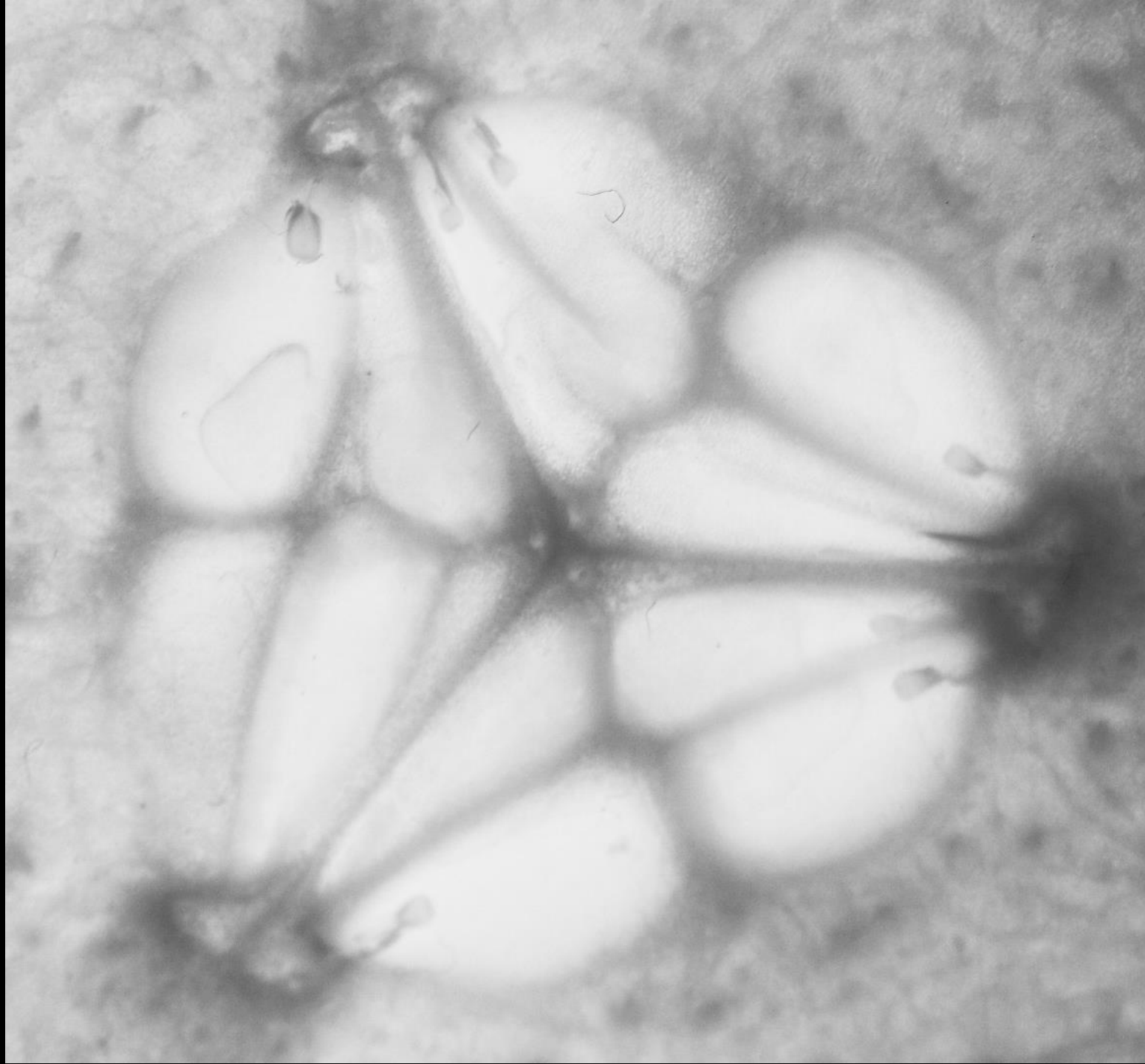
ONION





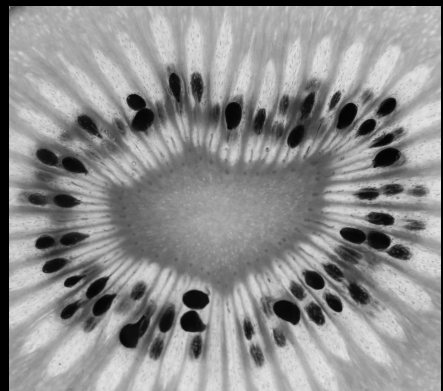




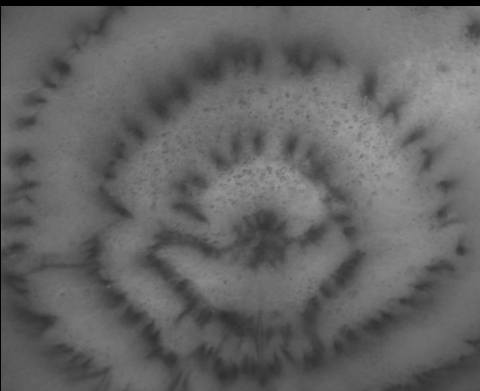




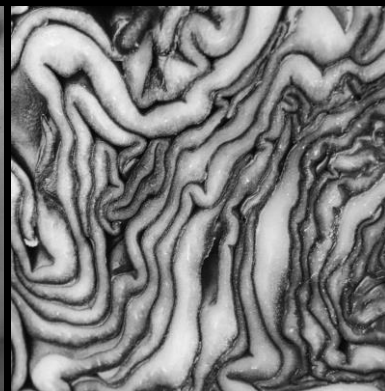
14 THE BEAUTY OF NATURE'S BOUNTY by Nicola King



KIWI



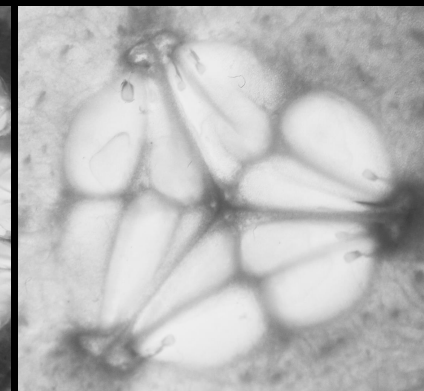
BEETROOT



CABBAGE



LEMON



CUCUMBER



ONION

20 THE BLUE HOUR, GHENT by Philip Smithies

Less well-known than nearby Bruges, the medieval Belgian city of Ghent is at its most attractive in the early evening.



THE THREE TOWERS



GRAVENSTEEN CASTLE



GREAT BUTCHERS' HALL



KORENLIE



ST MICHAEL'S CANAL



KRAANLEI













20 THE BLUE HOUR, GHENT by Philip Smithies

Less well-known than nearby Bruges, the medieval Belgian city of Ghent is at its most attractive in the early evening.



THE THREE TOWERS



GRAVENSTEEN CASTLE



GREAT BUTCHERS' HALL



KORENLIE



ST MICHAEL'S CANAL



KRAANLEI

15 THE FAIRY by Cathie Agates



HAPPY FAIRY



STRIKING A POSE



THOUGHTFUL FAIRY



FAIRY AND FRIENDS



FORLORN FAIRY



THE FAIRY HAS LOST HER WINGS













15 THE FAIRY by Cathie Agates



HAPPY FAIRY



STRIKING A POSE



THOUGHTFUL FAIRY



FAIRY AND FRIENDS



FORLORN FAIRY



THE FAIRY HAS LOST HER WINGS

17 THE LIFE CYCLE OF THE AMARYLLIS by Caro Shaw



BUDDING



BLOSSOMING



BLOOMING



FADING



DECAYING











17 THE LIFE CYCLE OF THE AMARYLLIS by Caro Shaw



BUDDING



BLOSSOMING



BLOOMING



FADING



DECAYING

20 THE SPRING NESTING CYCLE OF GREAT CRESTED GREBES

These photographs are a selection of those taken over a five-week period during a series of early morning site visits when lighting conditions were favourable.

They depict the main behaviours of the nesting cycle of Great Crested Grebes from initial courting to nest building and mating followed by egg incubation before the Grebette(s) emerge.



COURTING GREBES



NEST BUILDING GREBES



MATING GREBES



INCUBATING GREBE EGGS



THE GREBE FAMILY











20 THE SPRING NESTING CYCLE OF GREAT CRESTED GREBES

These photographs are a selection of those taken over a five-week period during a series of early morning site visits when lighting conditions were favourable.

They depict the main behaviours of the nesting cycle of Great Crested Grebes from initial courting to nest building and mating followed by egg incubation before the Grebette(s) emerge.



COURTING GREBES



NEST BUILDING GREBES



MATING GREBES



INCUBATING GREBE EGGS



THE GREBE FAMILY

THE END